

Ten Songs  
For the  
Ukulele  
In the Key of  
C

## Index

<b><u>Page</u></b>	<b><u>Song</u></b>
3	Another Saturday Night
4	Bad Moon Rising
5	Blue Moon
6	Don't Be Cruel
7	Mountain Of Love
8	On the Road Again
9	Stand By Me
10	The Lion Sleeps Tonight
11	Midnight Special
12	You Send Me

# Another Saturday Night

## CHORUS

C F  
Another Saturday night and I ain't got nobody  
C G7  
I've got some money 'cause I just got paid  
C F  
How I wish I had someone to talk to  
C G7 C G7  
I'm in an awful way.

C G7  
I got in town a month ago  
C F  
I've seen a lot of girls since then,  
C  
If I could meet 'em I could get 'em  
F  
But as yet I haven't met 'em  
C G7 C G7  
That's why I'm in the state I'm in.

## CHORUS

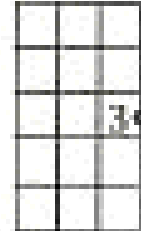
C G7  
Another fella told me  
C F  
He had a sister who looked just fine  
C  
Instead of bein' my deliverance  
F  
She had a strange resemblance  
C G7 C G7  
To a cat named Frankenstein.

## CHORUS

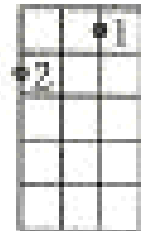
C G7  
Its hard on a fella  
C F  
When he don't know his way around  
C  
If I don't find me a honey  
F  
To help me spend my money  
C G7C G7  
I'm gonna have to blow this town.

## CHORUS

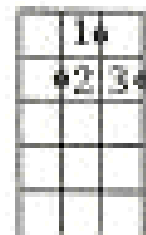
C



F



G7



## "Bad Moon Rising"

C G F C G F

C G F C

I see the bad moon arising.

C G F C

I see trouble on the way.

C G F C

I see earthquakes and lightnin'.

C G F C

I see bad times today.

[Chorus:]

F

Don't go around tonight,

C

Well, it's bound to take your life,

G F C

There's a bad moon on the rise.

C G F C

I hear hurricanes ablowing.

C G F C

I know the end is coming soon.

C G F C

I fear rivers over flowing.

C G F C

I hear the voice of rage and ruin.

[Chorus]

C G F C

Hope you got your things together.

C G F C

Hope you are quite prepared to die.

C G F C

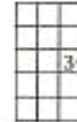
Looks like we're in for nasty weather.

C G F C

One eye is taken for an eye.

[Chorus]

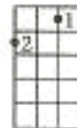
C



G



F



# Blue Moon

C Am Dm G7 C Am

Blue Moon, You saw me standing alone

Dm G7 C Am

Without a dream in my heart

Dm G7 C Am Dm G7

Without a love of my own

C Am Dm G7 C Am

Blue Moon, you knew just what I was there for

Dm G7 C Am

You heard me saying a prayer for

Dm G7 C F C

Someone I really could care for

Dm G7 C

And then there suddenly appeared before me

Dm G7 C

The only one my arms will ever hold

Fm Bb7 Eb

I heard somebody whisper please adore me

G D7 Dm G7

And when I looked to the moon it turned to gold

C Am Dm G7 C Am

Blue Moon now I'm no longer alone

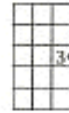
Dm G7 C Am

Without a dream in my heart

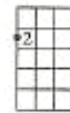
Dm G7 C F C

Without a love of my own

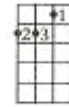
C



Am



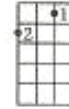
Dm



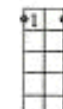
G7



F



Fm



Bb7



Eb



G

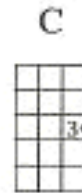


D7

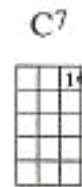


## "Don't Be Cruel"

C  
 You know I can be found, sitting home all alone,  
 F C  
 If you can't come around, at least please telephone.  
 Dm G7 C  
 Don't be cruel to a heart that's true.



C  
 Baby, if I made you mad for something I might have said,  
 F C  
 Please, let's forget the past, the future looks bright ahead,  
 Dm G7 C C7  
 Don't be cruel to a heart that's true.



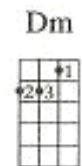
F G7 F G7 C  
 I don't want no other love, Baby it's just you I'm thinking of.

C C7  
 Don't stop thinking of me, don't make me feel this way,  
 F C  
 Come on over here and love me, you know what I want you to say.  
 Dm G7 C  
 Don't be cruel to a heart that's true.

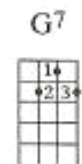


F G7 F G7 C  
 Why should we be apart? I really love you baby, cross my heart.

C  
 Let's walk up to the preacher and let us say I do,  
 F C  
 Then you'll know you'll have me, and I'll know that I'll have you,  
 Dm G7 C  
 Don't be cruel to a heart that's true.  
 F G7 F G7 C (stop)  
 I don't want no other love, Baby it's just you I'm thinking of.



Dm G7 C  
 Don't be cruel to a heart that's true.  
 Dm G7 C C7  
 Don't be cruel to a heart that's true.  
 F G7



F G7 C  
 I don't want no other love,  
 F G7 C  
 Baby it's just you I'm thinking of.

# MOUNTAIN OF LOVE

C\*

Standin' on a mountain lookin' down on a city

C7\*

The way I feel is a doggone pity

F\*

Teardrops fallin' from the mountainside

C\*

Many times I've been here, many times I've cried

G7

F

I used to be so happy when we were in love

C

Dm

G7 C

High on a mountain of love

C\*

Night after night I've been standin' here alone

C7\*

Weepin' my heart out out at the crack of dawn

F\*

Prayin' that you're lonely and you come here too

C\*

Hopin' just by chance that I'll get a glimpse of you

G7

F

Trying hard to find you somewhere up above

C

Dm

G7 C C7

High on a mountain of love

Bridge:

F

Em

Mountain of love, mountain of love

F

Em G7

You should be ashamed

F

Em

You used to be a mountain of love

F

G7

But you've just changed your name

Way down below there's a half a million people

Somewhere there's a church with a big tall steeple

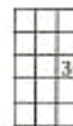
Inside a church there's an altar filled with flowers

Wedding bells are ringin' that should've been ours

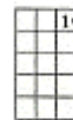
That's why I'm so lonely, my dreams gone above

High on a mountain of love

C



C7



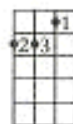
F



G7



Dm

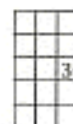


Em

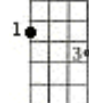


Shuffle

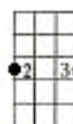
C



C6



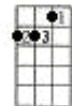
C7



F



F6



\*Shuffle

## On The Road Again

C

On the road again -

E7

Just can't wait to get on the road again.

Dm

The life I love is making music with my friends

F

G7

C

stop

And I can't wait to get on the road again.

C

On the road again

E7

Goin' places that I've never been.

Dm

Seein' things that I may never see again

F

G7

C

C7

And I can't wait to get on the road again.

F

On the road again -

C

Like a band of gypsies we go down the highway

F

We're the best of friends.

C

Insisting that the world keep turning our way

G7 stop

And our way

C

Is on the road again.

E7

Just can't wait to get on the road again.

Dm

The life I love is makin' music with my friends

F

G7

C

And I can't wait to get on the road again.

F

G7

C

And I can't wait to get on the road again.

F

G7

C

And I can't wait to get on the road again.

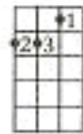
C



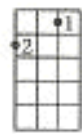
E7



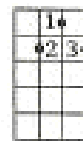
Dm



F



G7



C7





# Stand By Me

C Am F G  
C

When the night has come and the land is dark

F G C G

And the moon is the only light we'll see

C Am

No, I won't be afraid, oh, I won't be afraid

F G C

Just as long as you stand, stand by me

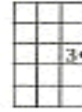
G C Am

So darling, darling, stand by me, oh, stand by me

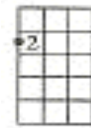
F G C G

Oh, stand, stand by me, stand by me

C



Am



C Am  
If the sky that we look upon should tumble and fall

F G C G

Or the mountain should crumble to the sea

C Am  
I won't cry, I won't cry, no, I won't shed a tear

F G C  
Just as long as you stand, stand by me

G C  
And darling, darling, stand by me

Am  
Darling, darling, stand by me

F  
Whenever you're in trouble

G C F C  
Won't you stand by me.

F



G

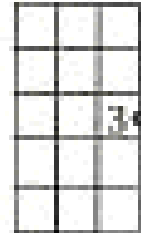


# The Lion Sleeps Tonight

Chorus

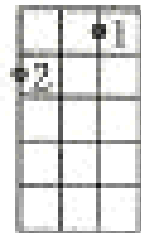
C F  
 (A-weema-weh, a-weema-weh, a-weema-weh, a-weema-weh)  
 C G7  
 (A-weema-weh, a-weema-weh, a-weema-weh, a-weema-weh)  
 C F  
 (A-weema-weh, a-weema-weh, a-weema-weh, a-weema-weh)  
 C G7  
 (A-weema-weh, a-weema-weh, a-weema-weh, a-weema-weh)

C



C F  
 In the jungle, the mighty jungle  
 C G7  
 The lion sleeps tonight  
 C F  
 In the jungle the quiet jungle  
 C G7  
 The lion sleeps tonight

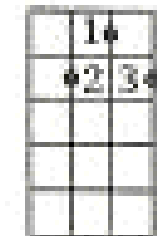
F



CHORUS

C F  
 Near the village, the peaceful village,  
 C G7  
 The lion sleeps tonight.  
 C F  
 Near the village, the quiet village,  
 C G7  
 The lion sleeps tonight.

G7



CHORUS

C F  
 Hush, my darling, don't fear, my darling,  
 C G7  
 The lion sleeps tonight  
 C F  
 Hush, my darling, don't fear, my darling,  
 C G7  
 The lion sleeps tonight

CHORUS

CHORUS

# The Midnight Special

C7 F C  
 Well you wake up in the mornin' you hear the work bell ring  
 G7 C C7  
 And you look upon the table and see the same darn thing.  
 F C  
 Ain't no food upon the table and no pork up in the pan.  
 G7 C C7  
 But you better not complain boy you get in trouble with the man.

## Chorus

F C  
 Let the Midnight Special shine a light on me  
 G7 C C7  
 Let the Midnight Special shine an everlovin' light on me.

F C C  
 If you're ever in Houston, well, you walk right;  
 G7 C C7  
 You better not gamble, there, you better not fight  
 F C  
 Or the sheriff will grab you and the boys will carry you down.  
 G7 C C7  
 And before you know it, you're penitentiary bound



## Chorus

F C  
 Here comes Miss Lucy, how in the world did you know?  
 G7 C C7  
 I can tell by her apron, and by the clothes she wore.  
 F C  
 Umbrella on her shoulder, piece of paper in her hand;  
 G7 C C7  
 She come to see the warden, she wants to free her man.

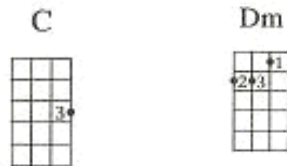


## Chorus

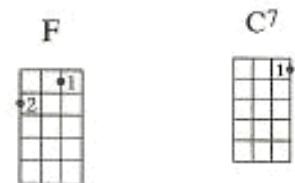
## Chorus

## You Send Me

C Am Dm G7  
 C Am Dm G7  
 Darling you send me  
 C Am Dm G7  
 I know you send me  
 C Am Dm G7  
 Darling you send me  
 C Am Dm G7  
 Honest you do, honest you do  
 Dm G7  
 Honest you do, whoa-oh-oh-oh-oh-oh



C Am Dm G7  
 You thrill me  
 C Am Dm G7  
 I know you, you, you thrill me  
 C Am Dm G7  
 Darling you, you, you, you thrill me  
 C F C C7  
 Honest you do



Dm G7 C  
 At first I thought it was infatuation  
 Dm G7 C  
 But now, it's lasted so long  
 Dm G7 C  
 Now I find myself wanting  
 D7 G7  
 To marry you and take you home  
 Whoa-oh-oh-oh-oh-oh



C Am Dm G7  
 You, you, you, you send me  
 C Am Dm G7  
 I know you send me  
 C Am Dm G7  
 I know you send me  
 C F C6  
 Honest you do